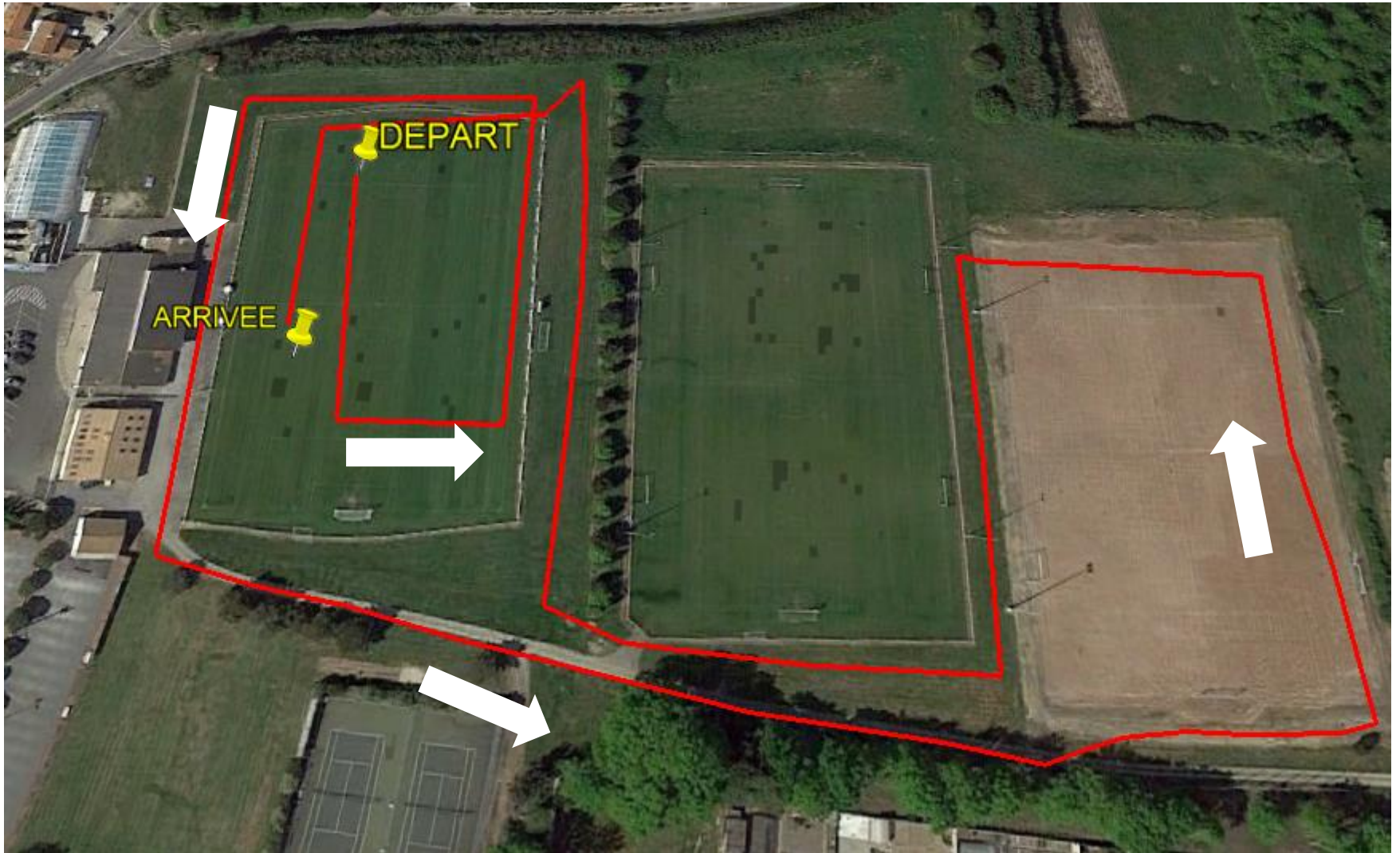
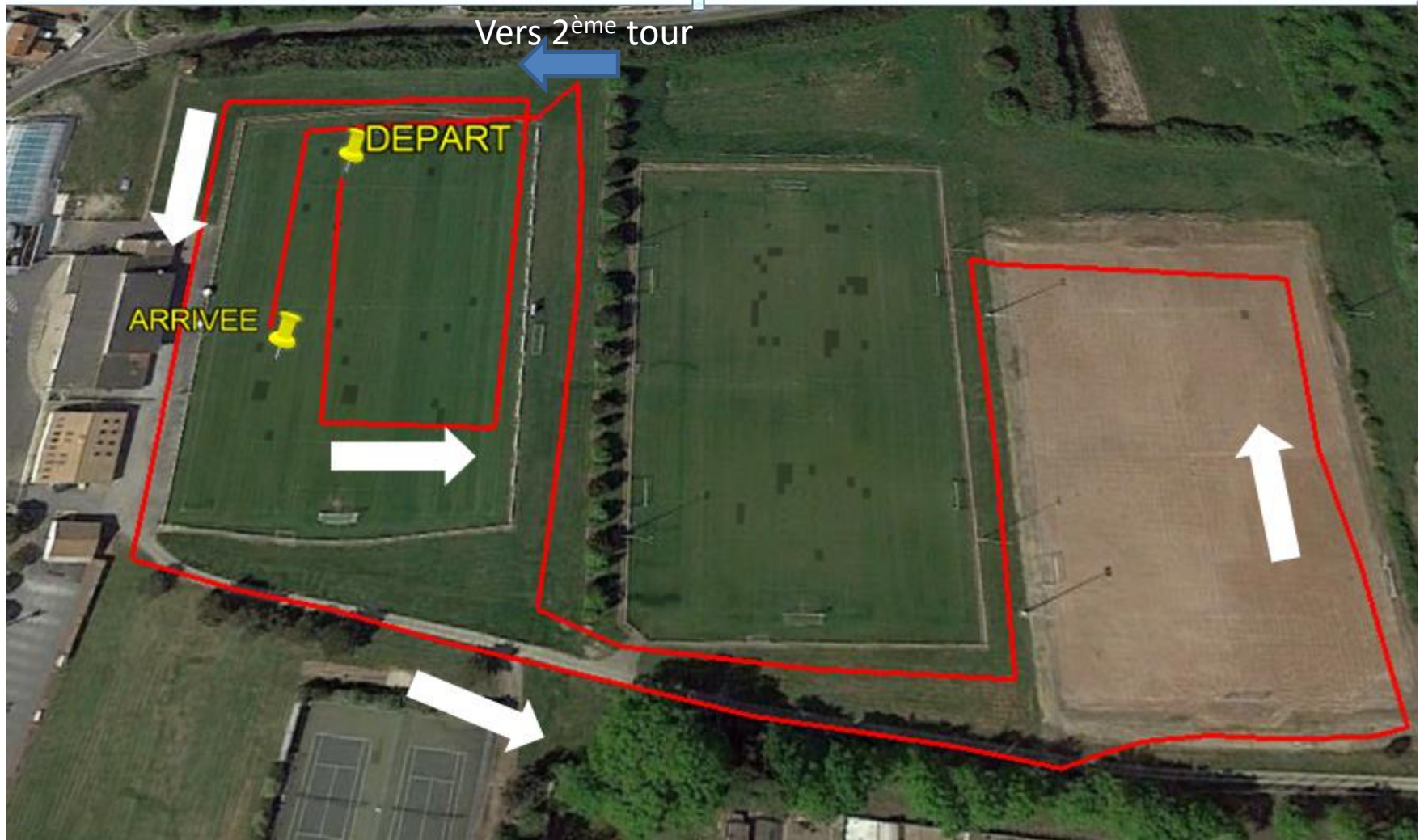


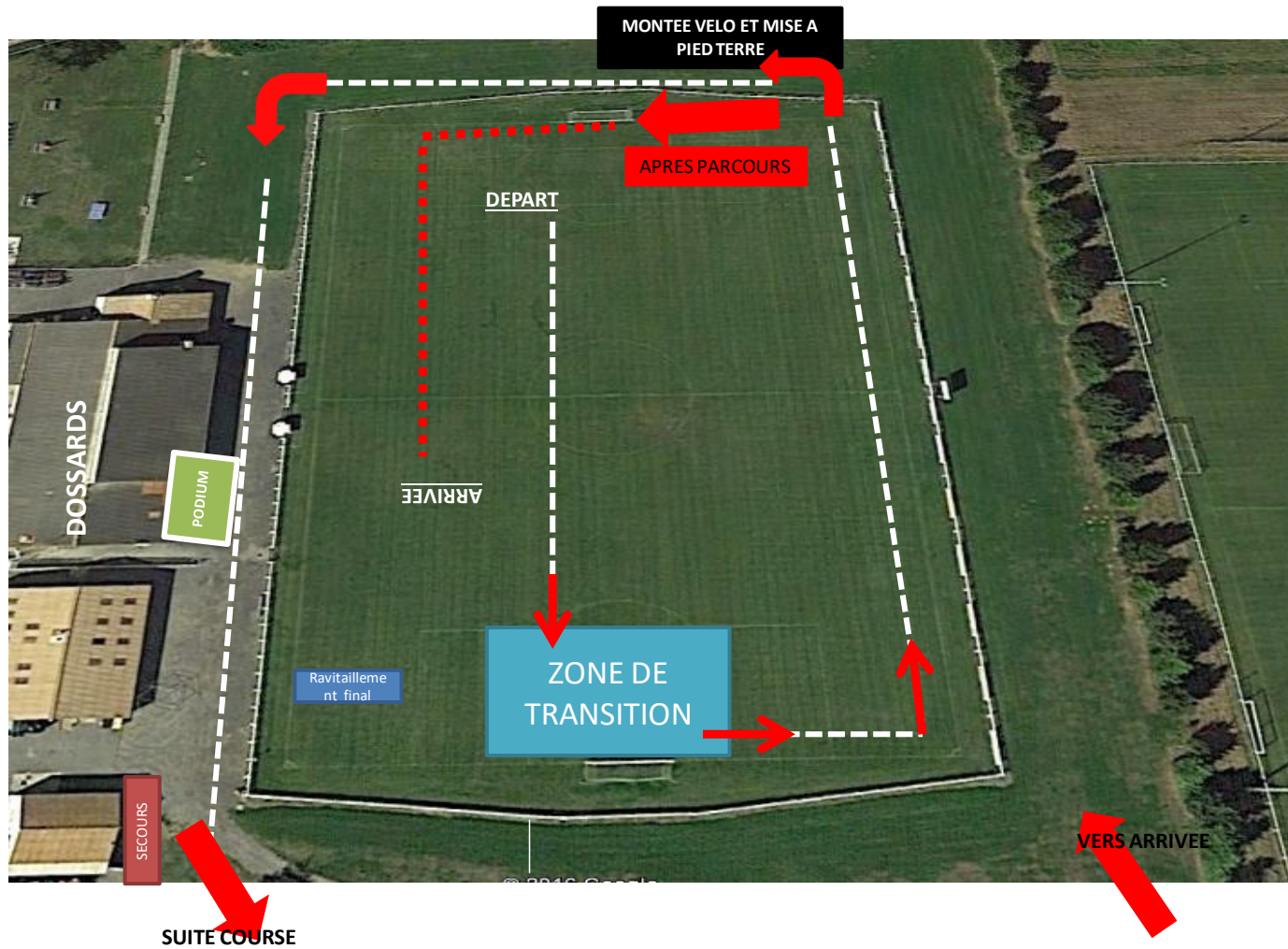
Circuit jeunes 1.2 km



Circuit jeunes 2 tours : 2.4 km



Transition jeunes

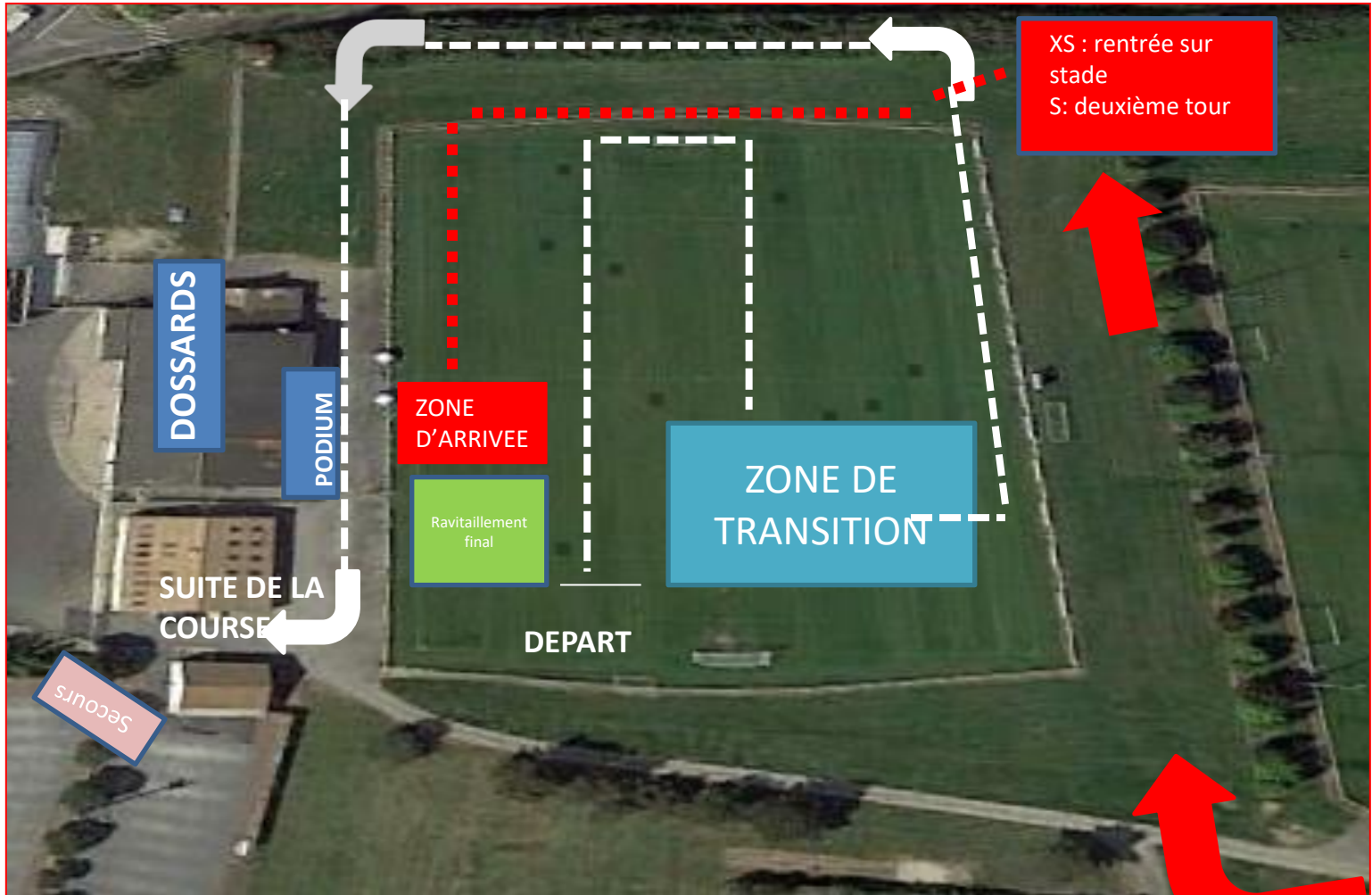


Circuit XS (1tour: 10km) et S (2 tours: 20km)



Transition XS /S

MONTEE VELO ET MISE A
PIED TERRE



XS : rentrée sur
stade
S: deuxième tour

DOSSARDS

PODIUM

ZONE
D'ARRIVEE

Ravitaillement
final

ZONE DE
TRANSITION

SUITE DE LA
COURSE

DEPART

Secours

RETOUR XS / S

Position SECOURS



ACCES
POMPIERS

RETRAIT
DOSSARDS



SECOURS

ACCES POMPIERS